

Presented in the USA by



Screening of Starch Powder with GKM Tumbler Screeners

A large number of GKM Tumbler Screening machines have been supplied to the starch industry for screening potato, corn, tapioca and wheat starch or starch derivatives.

In most cases the starches are dried down to about 12 % moisture and are screened at 125 to 250 micron. Usually, a very small amount of oversize particles has to be removed. A typical feed rate of a KTS 2000 for double screening with 250 micron mesh opening is approx. 15.000 kg/h prior to loading the material into tanks. The cleaning of the mesh clothes is made by bouncing balls. These huge capacities have been achieved in a French and Italian companies producing native corn starch.

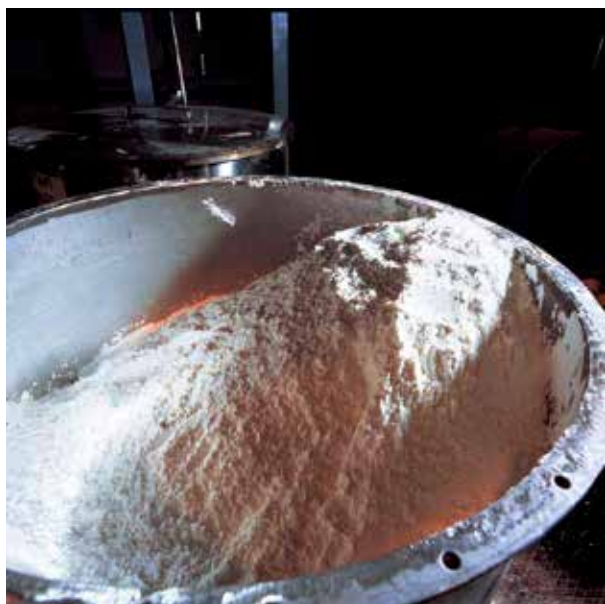
Tapioca starch, which is also sold to the paper industry, has to be screened even down to 125



www.KemutecUSA.com
215 788-8013

micron. On a KTS 2600 as double screening machine a feed rate of up to 8.000 kg/h can be achieved. Double screening construction is always recommended in order to get as little fines as possible out with the oversize. Therefore, the oversize from the upper and first screen is carried through a lateral passage inside the machine towards the centre of the bottom deck having the same mesh size for re-screening.

Some derivatives for special applications, e.g. as pharmaceutical products, have to be screened even down to 75 micron. However, for these specialities usually smaller machines like the KTS



1200 are necessary and are often equipped with an ultrasonic cleaning device to obtain higher feed rates and larger efficiency.

In many food companies it is a Standard (HACP) to do a control screening of bulk material prior to truck loading or packaging at mesh sizes between 1 and 5 mm. For such applications the GKM vibrating control screening machine series KTS-V2 is especially suitable. This unit has a central inlet and a central outlet for the fines. Huge capacities of up to 180.000 kg/h of native corn starch at 1.0 mm can be achieved with a KTS-V2 2000 having a screening area of 2.6 m² or e.g. 35 t/h at 2.0 mm mesh opening on KTS-V2 1600 for various dextrose fractions.

Some References:

- Tate & Lyle Group
 - Roquette
 - Syral
 - Amylum
 - Südstärke
 - Kröner
 - Sedamyl
- And others

Please feel free to contact us at any time if you need further information.

Kemutec - Tel: 215 788-8013

Email: Sales@KemutecUSA.com

Web: www.KemutecUSA.com

Presented in the USA by



130 Wharton Road • Bristol, PA 19007 USA

Tel: 215 788-8013 • Fax: 215 788-5113

Email: Sales@KemutecUSA.com

Web: www.KemutecUSA.com

- Kek Centrifugal Sifters
- Kek Mills
- PPS Air Classifier Mills
- GKM Tumbler Screeners
- Gardner Mixers and Blenders
- Mucon Valves
- Mucon Discharge Aids