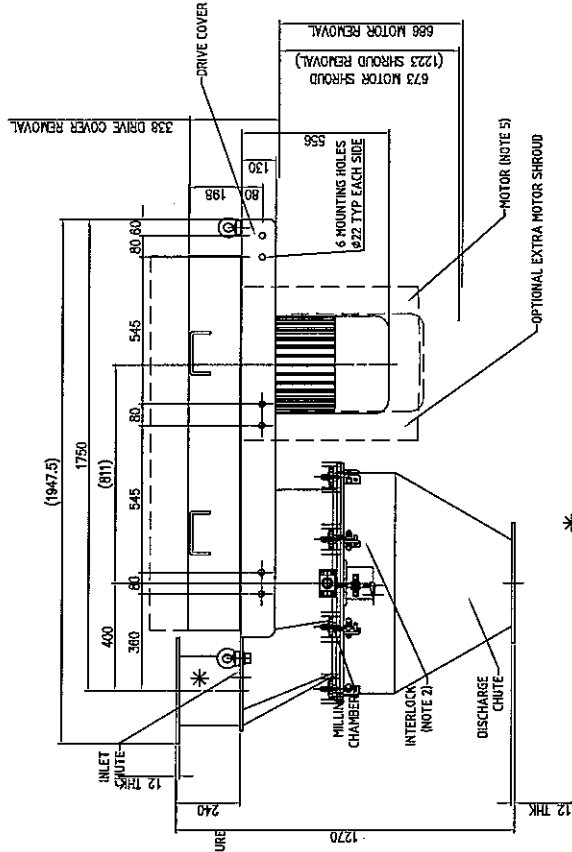
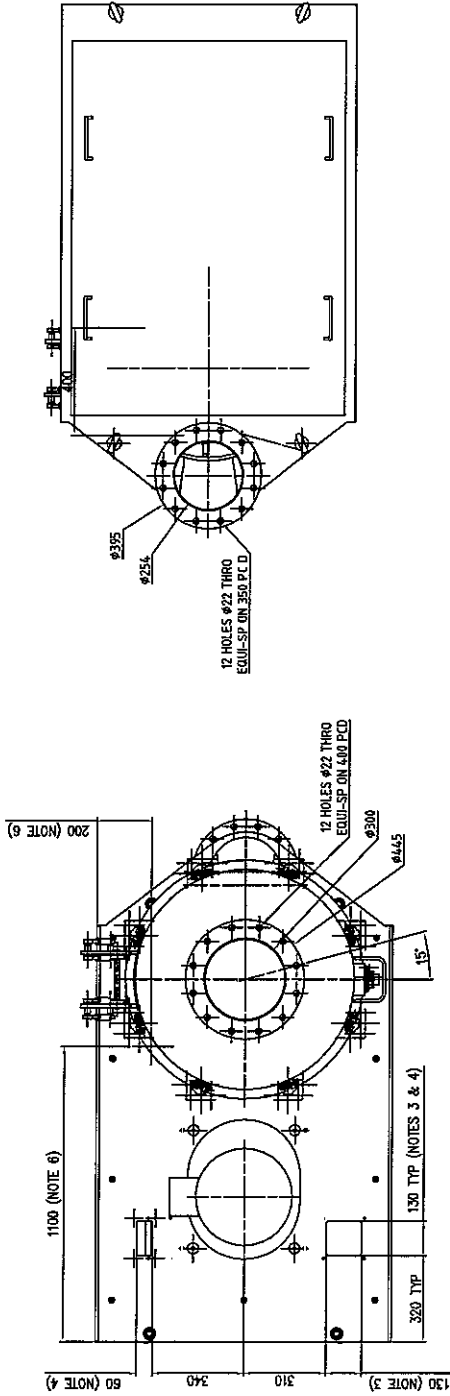


DO NOT SCALE DRAWING - IF IN DOUBT ASK



NOTES

- \* 1. INLET & OUTLET CONNECTIONS MUST BE SUITABLY GUARDED BY CLIENT TO PREVENT OPERATOR ACCESS TO ROTATING PARTS IN LINE WITH RELEVANT SAFETY REGULATIONS (E.G. BS EN 294 / BS5304:1998)
- 2. CONE MILL SUPPLIED WITH CASTELL MAI INTERLOCK FITTED TO INSPECTION DOOR AND FREE STANDING CASTELL FSK983 4 POLE 63 AMP KEY OPERATED ISOLATION SWITCH. SWITCH MUST BE WIRED INTO MOTOR CONTROL CIRCUIT TO PREVENT MOTOR RUNNING OR DE-ENERGISE MOTOR IF ALREADY RUNNING WHEN INTERLOCK IS DISENGAGED FOR ACCESS TO MILLING CHAMBER VIA INSPECTION DOOR.
- 3. 3 THK SS GLAND PLATE FOR CABLE ACCESS BENEATH DRIVE COVER, DRILL TO SUIT.
- 4. 3 THK SS GLAND PLATE FOR CABLE ACCESS WITHIN MOTOR SHROUD (WHERE USED), DRILL TO SUIT.
- 5. 18.5 kW METRIC FRAME OR 25 HP NEMA FRAME (FOR USA) ELECTRIC 4 POLE 3 PHASE MOTOR, IP55 ENCLASURE.
- 6. SEAL AIR PURGE CONNECTION FOR 6 MM OD TUBE. REQUIRES CLEAN DRY COMPRESSED AIR SUPPLY REGULATED AT 0-0.1 BAR (0-15 PSI).
- 7. BEATER SPEED 1,000 REV/MIN @ 50 Hz.
- 8. EST MASS 800 Kg.

**Kennetec Powder Technologies Ltd**  
 Milling Powder Technology  
 15000 Highway 100, Unit 100  
 P.O. Box 100, 10000 Highway 100  
 Delta, BC V9M 4H6, Canada  
 Tel: +1 250 636 3000  
 Fax: +1 250 636 3001  
 Web: www.kennetec.com

ISSUED BY: **R. ROWES**  
 CHECKED BY: **GENERIC**  
 APPROVED BY: **GENERIC**  
 SCALE: **1:10**  
 DATE: **06/11/03**

TITLE: **GENERAL ARRANGEMENT**  
 PART NO: **CM680**  
 DRAWING NO: **A4 DS552**  
 SIZE: **A**

ISSUE A  
 ISSUED FOR INFORMATION  
 CH 06/11/03

ALL DIMENSIONS IN MILLIMETRES  
 THIRD ANGLE PROJECTION  
 For all material, weld and finish specifications refer to purchase/works order unless stated otherwise

TOLERANCE SPECIFICATIONS  
 UNLESS OTHERWISE STATED

SHEET METAL DIMENSIONS	UNMACHINED DIMENSIONS
0 to 300 ± 1.00	0 to 100 ± 0.30
300 to 1000 ± 2.00	Over 100 ± 0.50
Over 1000 ± 3.00	Over 150 ± 1.00
ANGULAR DIMENSIONS	
± 0-30'	

DRAWING SPECIFICATIONS  
 UNLESS OTHERWISE STATED

Screw Threads to BS5433	Surface Finish to BS1134, microcentres
ISO Metric Coarse Pitch Series (Medium Pitch)	Welding Symbols to BS499 Part 2
Dimensional Tolerances to BS308	Units to Pt 6 to BS4800
Remove all sharp edges and burrs	

THIS DRAWING IS THE PROPERTY OF KENNETEC POWDER TECHNOLOGIES LTD AND MUST NOT BE COPIED OR SHOWN TO A THIRD PARTY WITHOUT THE WRITTEN CONSENT OF THIS COMPANY.

NOT FINISHED