

DO NOT SCALE DRAWING - IF IN DOUBT ASK

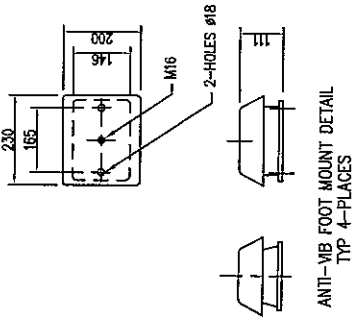
1575

NOTES:

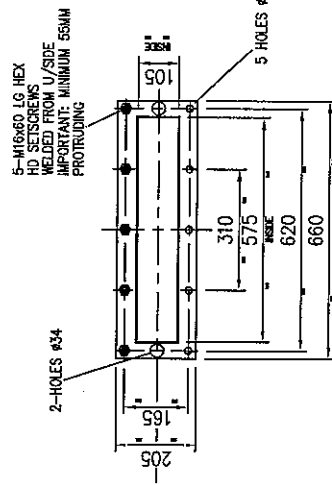
1) INLET & OUTLET CONNECTIONS MUST BE SUITABLY GUARDED BY CLIENT TO PREVENT OPERATOR ACCESS TO ROTATING/MOVING PARTS IN LINE WITH RELEVANT SAFETY REGULATIONS (BS EN 294/BS3304:1988 ETC)

NOTE:

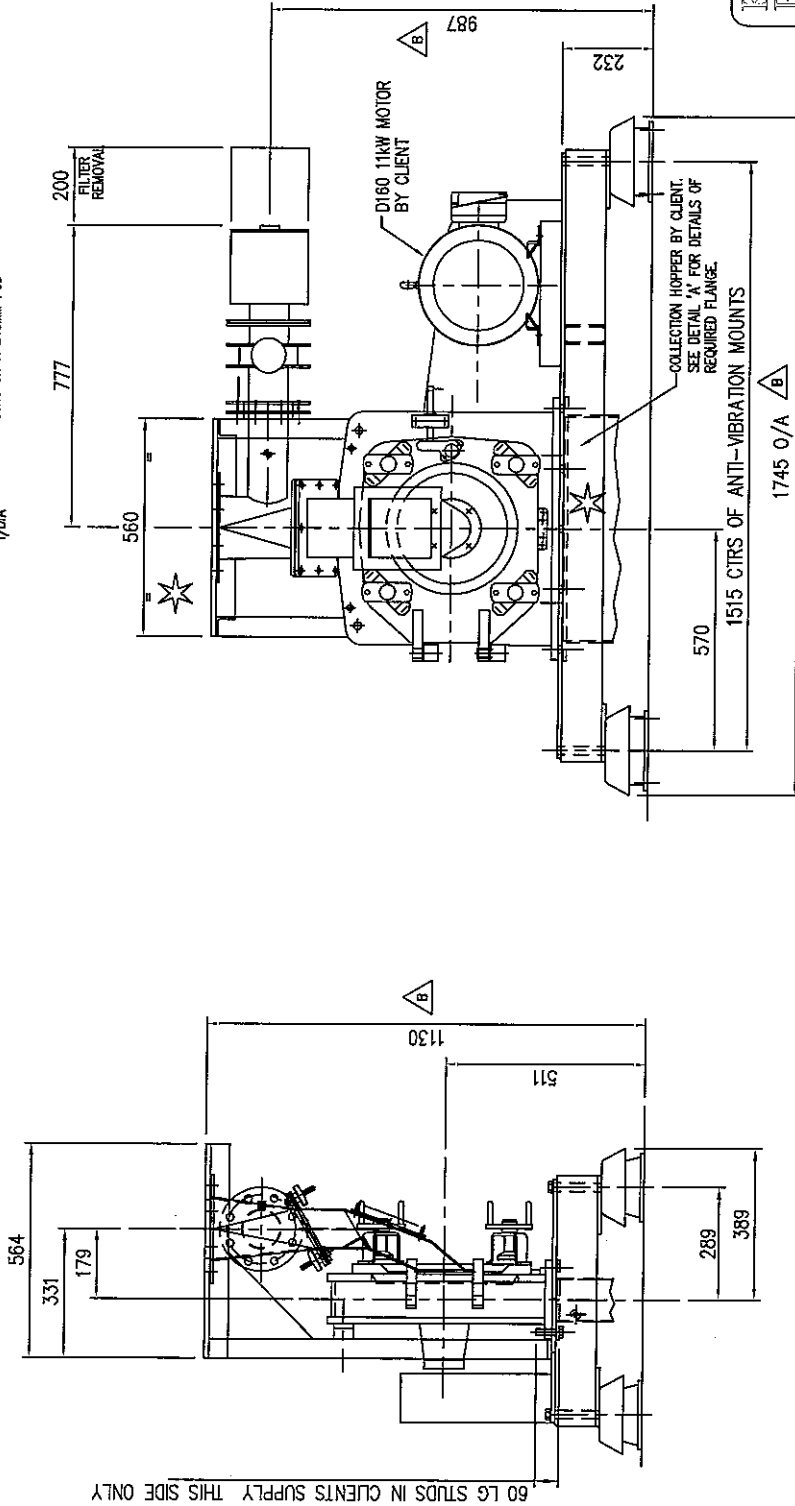
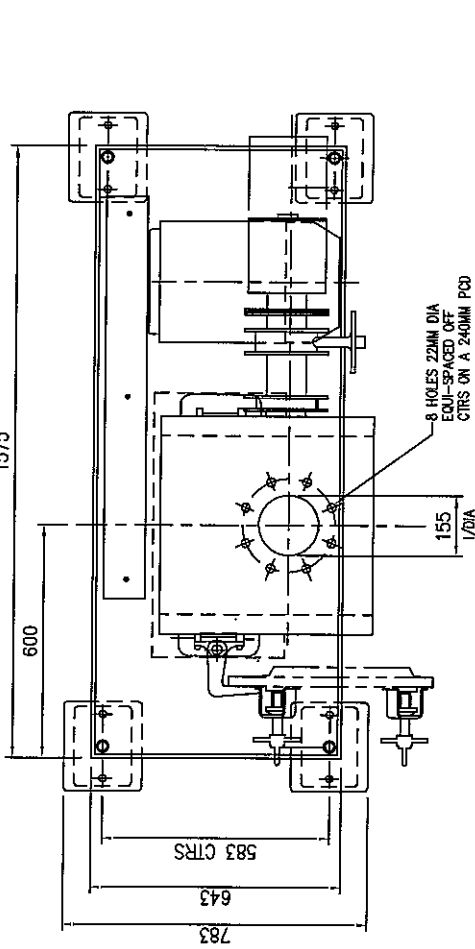
THE ROTARY SWITCH UNIT (SUPPLIED WITH THE MILL) MUST BE WIRED INTO THE MOTOR CONTROL CIRCUIT (BY CLIENT) TO PREVENT THE MOTOR RUNNING, OR DE-ENERGISE MOTOR IF ALREADY RUNNING, SHOULD THE SWITCH BE SET TO THE OFF POSITION.



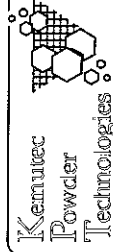
ANTI-MB FOOT MOUNT DETAIL  
TYP 4-PLACES



DETAIL 'A'  
PLAN ON COLLECTION HOPPER FLANGE



60 LG STUDS IN CLIENTS SUPPLY THIS SIDE ONLY



Kemulec Powder Technologies Ltd  
Springwood Way, Mansfield  
Tel: +44 (0)1923 412000  
Fax: +44 (0)1923 412001  
Email: sales@kemulec.com  
Web: www.kemulec.com

DRAWN BY  
**P. B. J. 280**

CHECKED BY

APPROVED BY

SCALE  
1:10

DATE  
09/09/02

TITLE  
**4H FABRICATED MILL &  
BEDPLATE 11KW 160 MOTOR**

ISSUE  
B

DRAWING No  
A2 DS521

ISSUE B  
HEIGHT CHANGE  
BEDPLATE CHANGE  
FOOTPRINT CHANGE

R.N.C. 17/10/2002

TOLERANCE SPECIFICATIONS  
UNLESS OTHERWISE STATED

SHEET METAL DIMENSIONS  
0 to 100 ± 0.20  
100 to 250 ± 0.30  
250 to 500 ± 0.40  
500 to 1000 ± 0.50  
1000 to 1500 ± 0.60  
1500 to 2000 ± 0.70  
2000 to 3000 ± 0.80  
3000 to 4000 ± 0.90  
4000 to 5000 ± 1.00

DRAWING SPECIFICATIONS  
UNLESS OTHERWISE STATED

Screw threads to BS5455  
ISO Metric Coarse Pitch Series (Metric Pt)  
Surface Finish to BS1544 In microinch  
Welding Symbols to BS549 Part 2  
Dimension & Geometric Tolerances to BS2098  
Limits & Fits to BS4500  
Remove all sharp edges and burrs

THIS DRAWING IS THE PROPERTY OF  
KEMULEC POWDER TECHNOLOGIES LTD  
AND MUST NOT BE COPIED OR SHOWN  
TO A THIRD PARTY WITHOUT THE WRITTEN  
CONSENT OF THIS COMPANY. ©

NOT MARKED

ALL DIMENSIONS IN MILLIMETRES

THIRD ANGLE PROJECTION

For all material, weld  
and finish specifications  
refer to purchase/works  
order.  
Unless stated otherwise