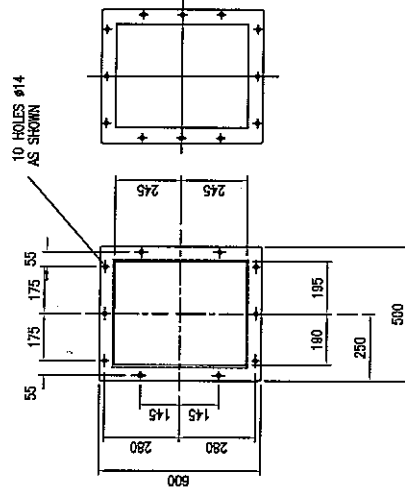
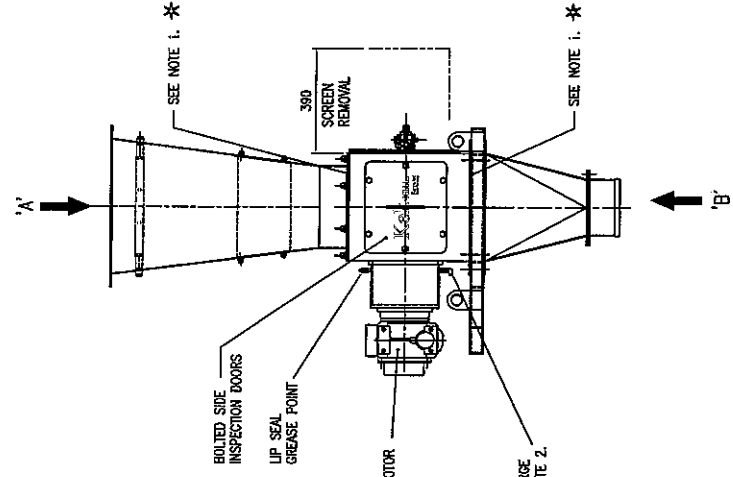
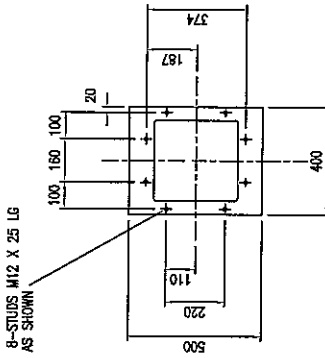
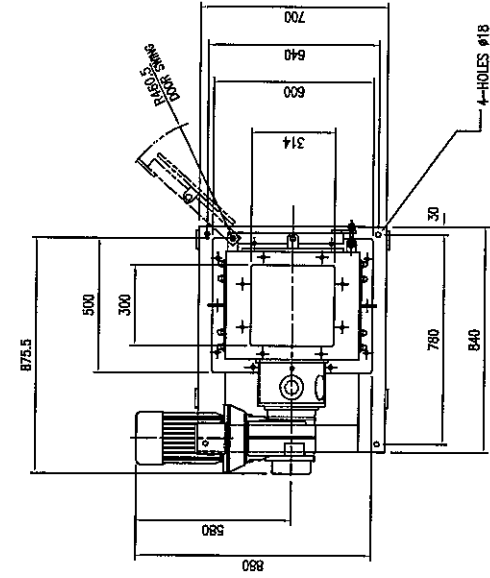


DO NOT SCALE DRAWING - IF IN DOUBT ASK



NOTES:

1. \*INLET / OUTLET CONNECTION MUST BE SUITABLY GUARDED BY CLIENT TO PREVENT OPERATOR ACCESS TO ROTATING PARTS IN LINE WITH RELEVANT SAFETY REGULATIONS (SEE BS EN 294/BS5304:1988).
2. Ø6 OD PUSH-IN TUBE BULKHEAD CONNECTOR FOR SEAL PURGE. REQUIRES REGULATED SUPPLY OF CLEAN DRY AIR/GAS(INERT) AT 0 TO 15 psig. (0 TO 1 bar.) 0.17 TO 0.7 cu.ft./min.(5 TO 20 lt./min.)
3. MACHINE WEIGHTS  
BODY / DRIVE ASSY 190 kg
4. DIMENSIONS SET AS PER SAFETY OF MACHINERY STANDARDS BS EN 284 : 1992
5. REFER TO KEMUTEC QUOTATION FOR SCOPE OF SUPPLY

	DRAWN BY <b>J. S. ALBY</b>	CHECKED BY _____
	APPROVED BY _____	SCALE 1:10
TITLE <b>M303C KIBBLER 3kW DRIVE                  BOLTED SIDE &amp; HINGED END DOOR</b>	DRAW NO A1	DATE 03/10/01

ISSUE A FIRST ISSUE	I.S.E. 04/05/01
<b>TOLERANCE SPECIFICATIONS</b> UNLESS OTHERWISE STATED SHEET METAL DIMENSIONS 0 to 300 ± 0.20 30 to 1000 ± 0.30 OVER 1000 ± 0.50 ANGULAR DIMENSIONS ± 0°-30'	ALL DIMENSIONS IN MILLIMETRES THIRD ANGLE PROJECTION For all material, weld and finish specifications refer to purchase/works order unless stated otherwise
<b>DRAWING SPECIFICATIONS</b> UNLESS OTHERWISE STATED Screw threads to BS3643 ISO Metric Coarse Pitch Series (Medium Fit) Surface Finish to BS134, in micrometres Welding Symbols to BS499 Part 2 Dimension & Geometrical Tolerances to BS308 Units & Fits to BS4500 Remove all sharp edges and burrs	THIS DRAWING IS THE PROPERTY OF KEMUTEC POWDER TECHNOLOGIES LTD AND MUST NOT BE COPIED OR SHOWN TO A THIRD PARTY WITHOUT THE WRITTEN CONSENT OF THIS COMPANY.