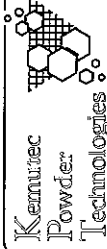
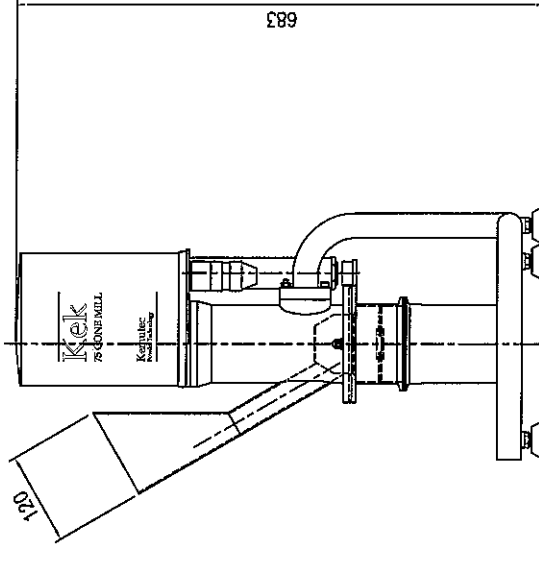
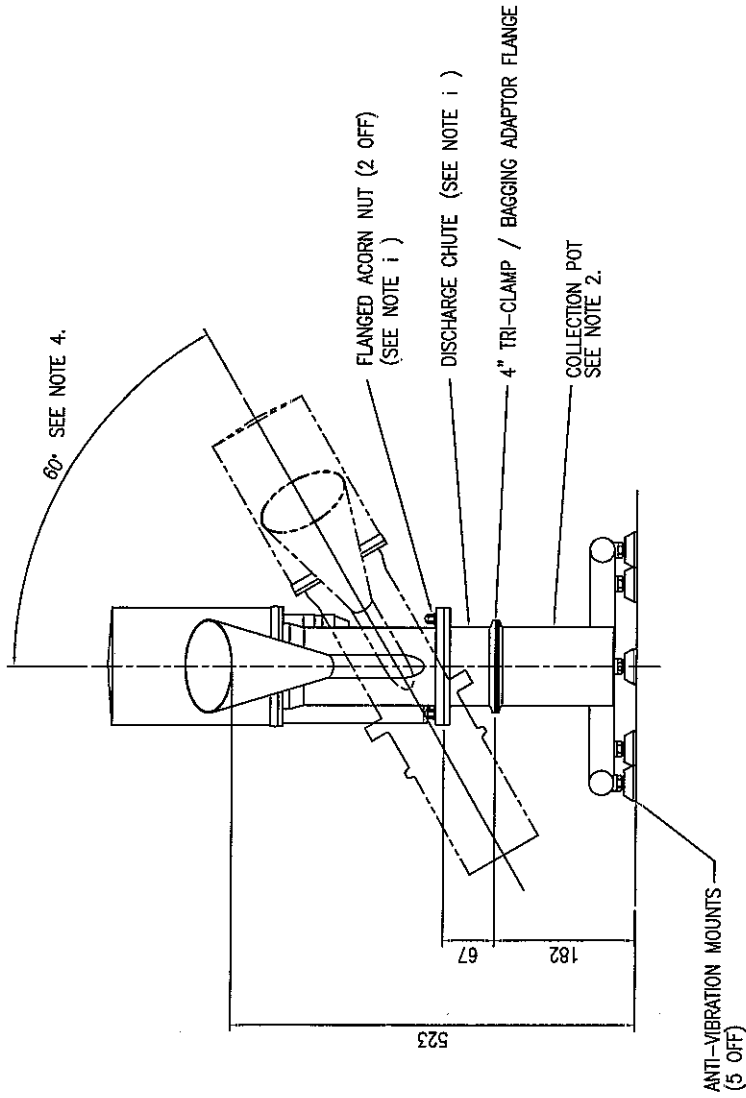
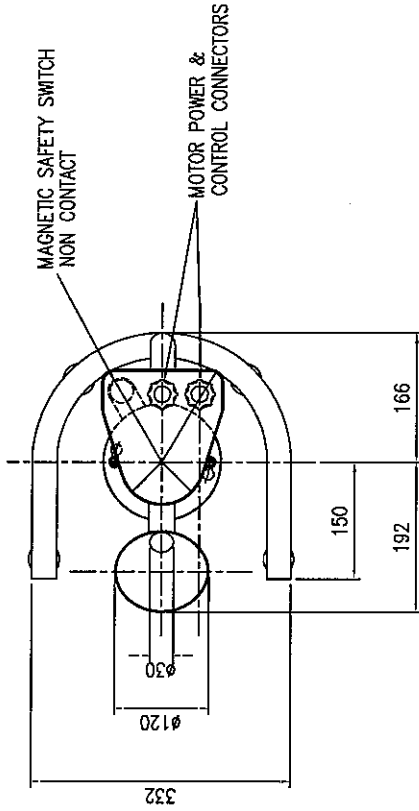


DO NOT SCALE DRAWING - IF IN DOUBT ASK

NOTES:

1. KEY SLOTTED QUICK RELEASE DISCHARGE CHUTE COMPLETE WITH NON CONTACT INTERLOCK OUTLET GRILLED TO PREVENT ACCESS TO ROTATING PARTS. IN LINE WITH RELEVANT SAFETY REGULATIONS (SEE BS EN 294/BS5304:1988).
2. 1 LITRE CAPACITY COLLECTION POT FOR OPTIONAL ENCLOSED COLLECTION QUICK RELEASE CLAMP & GASKET SUPPLIED
3. ROUND INLET OPENING IN LINE WITH RELEVANT SAFETY REGULATIONS (SEE BS EN 294/BS5304:1988).
4. HEAD SWING TO AID CLEANING
5. UNIT WEIGHT 21kg



Kemutec Powder Technologies Ltd  
 Springwood Way, Meadfield  
 Chesham, Bucks HP12 3ND  
 Tel: +44 (0)1825 412000  
 Fax: +44 (0)1825 412001  
 Email: [info@kemutec.com](mailto:info@kemutec.com)  
 Web: [www.kemutec.com](http://www.kemutec.com)

DRAWN BY  
**M. MERRY**

CHECKED BY

APPROVED BY

SCALE  
 1:5

ISSUE DATE  
 A 112/10/00

TITLE  
**75 CONE MILL, FRONT INLET  
 HOPPER (0.5 KW D.C DRIVE)**

DRAWING No  
 A2 DS501

ALL DIMENSIONS IN MILLIMETRES  
 THIRD ANGLE PROJECTION   
 For all material, weld  
 and finish specifications  
 refer to purchase/works  
 order  
 unless stated otherwise

TOLERANCE SPECIFICATIONS	
UNLESS OTHERWISE STATED	
SHEET METAL DIMENSIONS	0 to 200 ± 0.20
300 to 1000 ± 0.30	Over 100 ± 0.30
OVER 1000 ± 0.50	
WELDED DIMENSIONS	0 to 100 ± 0.20
OVER 100 ± 0.30	Over 100 ± 0.30
ANGULAR DIMENSIONS	± 0-30'

DRAWING SPECIFICATIONS	
UNLESS OTHERWISE STATED	
Scale	As shown
ISO Metric Coarse Thread	Series (Medium Fit)
Welding Symbols	to BS456 Part 2
Dimensional & Geometrical Tolerances	to BS508
Limits & Fits	to BS509
Remove all sharp edges and burrs	

THIS DRAWING IS THE PROPERTY OF  
 KEMUTEC POWDER TECHNOLOGIES LTD  
 AND MUST NOT BE COPIED OR SHOWN  
 TO A THIRD PARTY WITHOUT THE WRITTEN  
 CONSENT OF THIS COMPANY. ©

REV: 000000