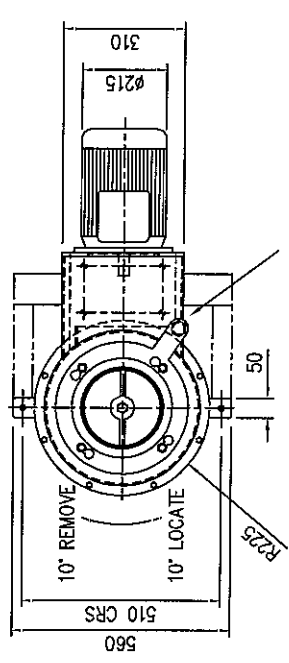


DO NOT SCALE DRAWING - IF IN DOUBT ASK

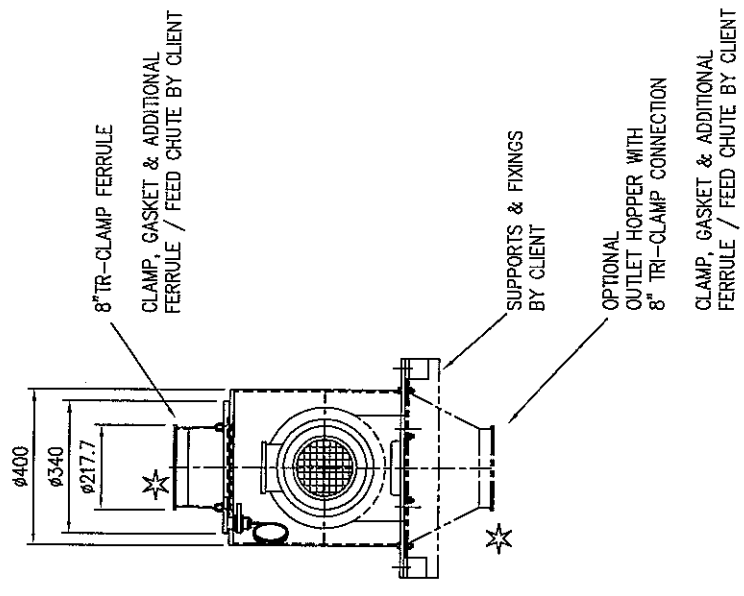
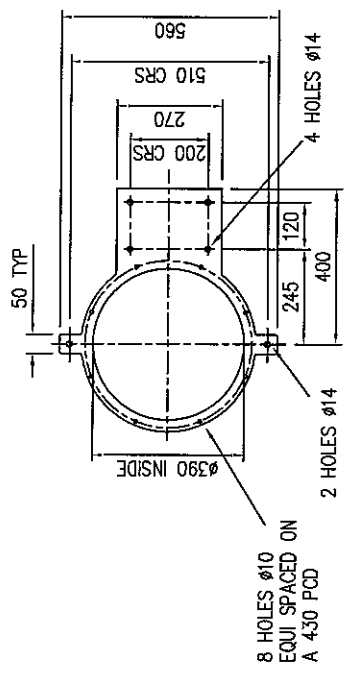
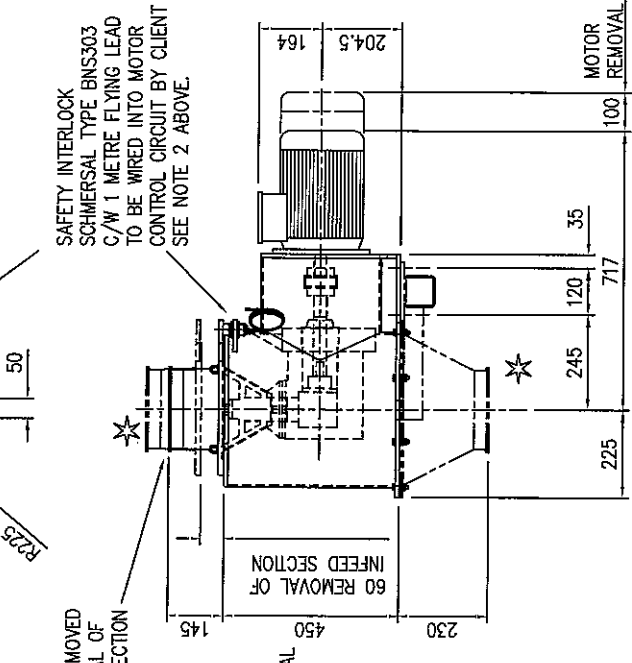
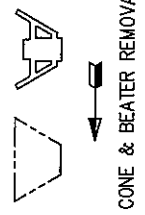
NOTES:

- 1) INLET & OUTLET CONNECTIONS MUST BE SUITABLY GUARDED BY CLIENT TO PREVENT OPERATOR ACCESS TO ROTATING/MOVING PARTS IN LINE WITH RELEVANT SAFETY REGULATIONS (BS EN 294/BS5304:1988 ETC)
- 2) ALL SAFETY INTERLOCKS MUST BE WIRED INTO MOTOR CONTROL CIRCUIT TO PREVENT THE MOTOR RUNNING OR DE-ENERGISE THE MOTOR IF ALREADY RUNNING SHOULD THE INTERLOCKS BE ACTUATED BY REMOVING TOP SECTION REFER TO INSTRUCTION MANUAL
- 3) APPROX NET WEIGHT: 150kg



SAFETY INTERLOCK  
SCHMERSAL TYPE BNS303  
C/W 1 METRE FLYING LEAD  
TO BE WIRED INTO MOTOR  
CONTROL CIRCUIT BY CLIENT  
SEE NOTE 2 ABOVE.

CONE RETAINER TO BE REMOVED  
FOR ACCESS AND REMOVAL OF  
THE CONE AND BEATER SECTION



**Kemutec Powder Technologies**  
Kemutec Powder Technologies Ltd  
Spinkwood Way, Llandudno  
Gwynedd, UK, LL50 2NU  
Tel: +44 (0)1825 412000  
Fax: +44(0)1825 412001  
Email: sales@kemutec.com  
Web: www.kemutec.com

DRAWN BY *M. G. Lawton*  
CHECKED BY

APPROVED BY  
SCALE 1:10  
DATE 11/07/00

TITLE  
CM220 UG CONE MILL  
DIRECT DRIVE G/BOX  
DRAWING No A2 DS497  
ISSUE A

ALL DIMENSIONS IN MILLIMETRES  
THIRD ANGLE PROJECTION  
For all material, weld and finish specifications refer to purchase/works order unless stated otherwise

TOLERANCE SPECIFICATIONS  
UNLESS OTHERWISE STATED  
SHEET METAL DIMENSIONS  
0 to 100 ± 0.20  
100 to 300 ± 0.30  
300 to 1000 ± 0.50  
OVER 1000 ± 1.00  
ANGULAR DIMENSIONS  
0 to 90 ± 0.20  
90 to 180 ± 0.30

DRAWING SPECIFICATIONS  
UNLESS OTHERWISE STATED  
Screw threads to BS5454  
ISO Metric Coarse Pitch Series (Medium Fit)  
Welding Symbols to BS54 Part 2  
Dimension & Geometrical Tolerances to BS308  
Units & Fits to BS4800  
Remove all sharp edges and burrs

THIS DRAWING IS THE PROPERTY OF KEMUTEC POWDER TECHNOLOGIES LTD AND MUST NOT BE COPIED OR SHOWN TO A THIRD PARTY WITHOUT THE WRITTEN CONSENT OF THIS COMPANY.  
MFL/CM220